

# BUILT-IN BURNER with/without lip





1. Packaging	page 3
2. Safety	page 4
3. Content of the box	page 4
4. Positioning	page 5
5. Installation	page 6
7. Operating Instructions	page 9
8. Bioethanol	page 10
9. Maintenance	page 10
10. Disposal and Recycling	page 10
11. Symbols of Awareness	page 11

It is imperative that you read this manual before using the fireplace. Keep the manual in a safe place for further reference.

It is important that you read the installation and operation instructions and adhere to the safety measures described herein.

It is also important that you are aware of any local rules and regulations which might apply to the use of bioethanol fireplaces.

Decoflame ApS cannot be held responsible for any accident or damages caused as a result of non-adherence to these instructions.

Please keep the packaging of your fireplace in case it needed to be sent back to the factory.

## 1. PACKAGING

### Upon receiving the fireplace, take notice of the following:

The fireplace can be packed in:

- 1) A cardboard box with polystyrene inside and placed on a pallet.
- 2) A wooden crate with polystyrene inside and with 50-100mm wooden support for easier handling with a fork- or pallet lift.

### Damages of the packaging

Please check the state of the cardboard box or the wooden crate while the courier is still there for visible damages.

If any damages are visible on the packaging it is **EXTREMELY IMPORTANT** to write a remark about them on the delivery note, in the presence of the courier. Afterwards it is very important to contact Decoflame immediately with the following documentation:

- 1) Photos of all 4 sides of the pallet or wooden crate / cardboard box.
- 2) A description and explanation of the damage.
- 3) A copy or a photo of the delivery note from the driver/courier with the written remark and tracking number.

Contact the courier company immediately and inform them about the damage. Please remember to inform the tracking number.

Hereinafter Decoflame will contact you within the following 3-5 working days.

*When you remove the fireplace from the pallet or take it out of the box, please follow the instructions below carefully.*

### Unpacking the fireplace

Lift or drive the whole box or crate as close as possible to the place where the fireplace is going to be mounted or installed.

Open the box or wooden crate carefully without causing scratches or damages.

We recommend use of drilling machine with TX20 or screw driver. Make sure that you slowly and carefully take out the fireplace and place it down on a flat surface without dropping it.

Please make sure that every item or part is wrapped out of the foam foil. If anything is missing please contact Decoflame immediately or send an email describing the missing parts together with photos of the contents in the box.

It is very **IMPORTANT** to keep the wooden crate or the cardboard, in case the fireplace will need to be returned to Decoflame for service or repair. In the situation where the original packaging is not available anymore, Decoflame can send a new wooden crate. For further information about the costs, please contact Decoflame.

### Damages of the Fireplace

If the packaging is not damaged and corresponding to the images sent by Decoflame with the tracking number, the wooden crate/cardboard box can be open.

If you notice any damage on the fireplace, the following information needs to be sent with Decoflame:

- 1) Photos of all 4 sides of the pallet / wooden crate AND the fireplace.
- 2) A description and explanation of the damage.
- 3) Contact the courier and inform them about the damages. Please remember to inform the tracking number.
- 4) Contact Decoflame by email and enclose all documents according points 1-4. Please remember to inform the tracking number and order number (4-5 digits e.g. 6878 or 10149. The order number can be found on the delivery note from Decoflame or from your retailer).

*The deadline for claiming transport damages is maximum 3 working days from the date of delivery. Thereafter, the delivery is considered flawless and accepted. Complaints in this connection can therefore no longer be invoked.*

Contact information at Decoflame:

Decoflame ApS  
Vang Mark 2  
9380 Vestbjerg  
Denmark  
Tel. +45 96 30 48 00

(Opening hours: Mon-Thur. 08:00-16:00 and Fri. 08:00-15:30 Danish Time)  
Email: [logistic@decoflame.dk](mailto:logistic@decoflame.dk)  
Attention line in the email: Order number (4-5 digits).

Decoflame refers to The Generals Sales and Delivery Terms.  
If any questions or doubts please contact Decoflame or local retailer.

## DO NOT

1	<b>DO NOT</b> open the box or wooden crate with sharp objects.
2	<b>DO NOT</b> flip the cardboard box or wooden crate on the sides or on the top. The arrow stickers <b>MUST</b> be followed carefully.
3	<b>DO NOT</b> use a hammer or other hard objects.
4	<b>DO NOT</b> use saws or other similar objects.
5	<b>DO NOT</b> smoke near the fireplace as there might be bioethanol
6	<b>DO NOT</b> lift in the parts which are sensitive to lifting and bending.

## 2. SAFETY

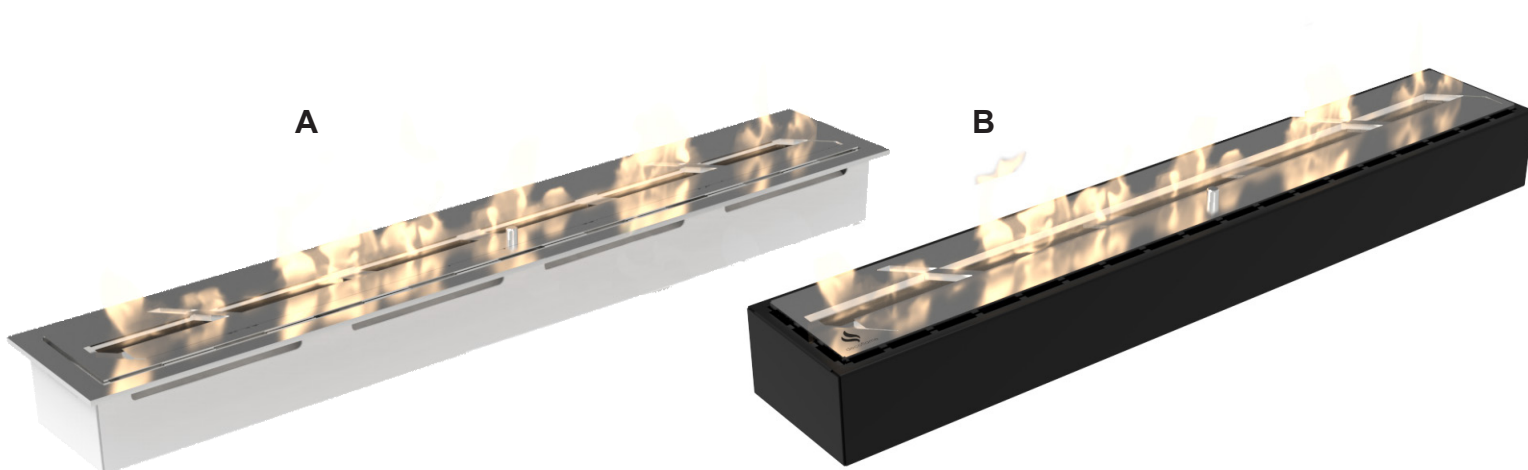
Naturally, safety is imperative dealing with open fire. All decoflame® burners are intelligently engineered, manufactured and quality-tested in Denmark with highest product safety and user-friendliness in mind.

The unique and design-protected decoflame® burner which is thoroughly tested and its closing mechanism manually adjusted prior to leaving the production line. *The decoflame® burner must not be used without its matching safety chamber!*

Please strictly adhere at all times to all safety measures described in this manual.

## 3. CONTENT OF THE BOX

	Pcs.	Content
A:	1	Built-in burner with lip <b>OR</b>
B:	1	Built-in burner without lip
C:	1	Shuttertool
D:	1	Manual



Figur 1.1

## 4. POSITIONING

Make sure that position your Decoflake® burner within its safety chamber in non-flammable surroundings in a safe place, which means a location which is not exposed to any draught, as bioethanol is a volatile fluid. No chimney or flue is required.

In fact, only the vapour of the bioethanol is burning when lit. You should not touch the flames of the lit fireplace or blow into the flames, as this will cause the flames to escape from the fireplace and they will become uncontrollable.

If the burner is exposed to draught, the flames lay down on the top of the burner which does not only make them invisible, but also leads an overheating of the burner resulting in an increased consumption of bioethanol and an undesired high combustion temperature.

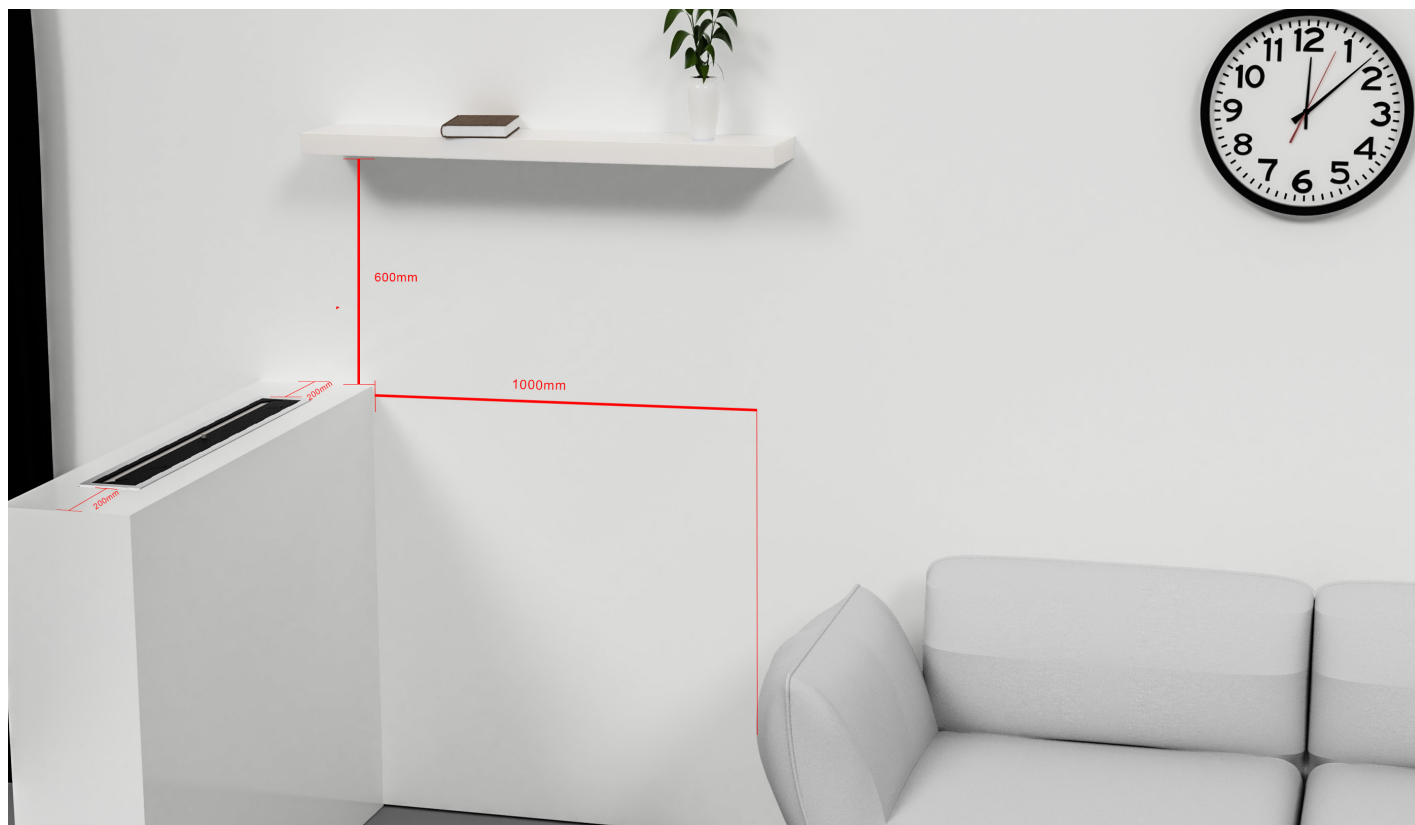
Should you experience such behaviour, you must change the setting of your fireplace application.

Decoflake® built-in burner with- or without Lip can be placed next to each other in one custom-made safety chamber which accommodates two or more burners in a row.

### CLEARANCES

Make sure that you adhere to the following clearances when incorporating your Decoflake® burner in your own fireplace creation:

ABOVE	FRONT	REAR	SIDES
600mm	200mm	200mm	1000mm



You should also keep a distance of at least 40 cm moving past the burner, as your movement may have an impact on the flames.

**NB – We do not recommend to position TV-screens or valuable paintings above the fire as the upwards drifting warm air might damage those. If you intend to do so anyway, please contact Decoflake for advice.**

Make sure that the cut-out into which you intend to place the decoflake® burner with safety chamber is perfectly in level and that your whole fireplace construction is made of **non-flammable** material.

When choosing a suitable height as position for your fireplace setting please also consider keeping it out of reach of smaller children and pets.

During operation of your fireplace and never leave your fireplace unattended when it is lit.  
If in doubt, please contact Decoflake.



## 5. INSTALLATION

Walls surrounding the decoflame® burner must be covered with non-inflammable materials like fibre plaster boards (e.g. Fermacell, GypRock Fireline) or bricks. The surface onto which or the cut-out into which you wish to place the safety chamber with burner must be perfectly in level.

Decoflame® built-in burners can be placed next to each other in one custom-made safety chamber which accommodates two or more burners in a row. Your decoflame® burner is **NOT** suited to be used with decorative refractory items like pebbles or logs.

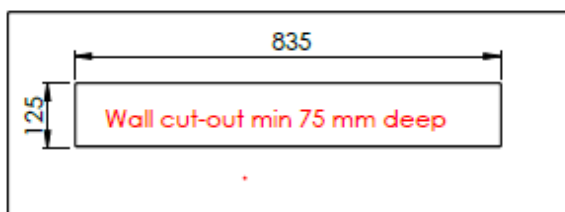
Unless other is mentioned at the drawings given by confirmation - see wall-cut-out dimensions below.

### WALL-CUT-OUT

#### Built-in Burner with lip

400 Manual Burner with Lip: 445x75x142mm	W125xL435xD75
500 Manual Burner with Lip: 545x75x142mm	W125xL535xD75
600 Manual Burner with Lip: 645x75x142mm	W125xL635xD75
700 Manual Burner with Lip: 745x75x142mm	W125xL735xD75
800 Manual Burner with Lip: 845x75x142mm	W125xL835xD75
900 Manual Burner with Lip: 945x75x142mm	W125xL935xD75

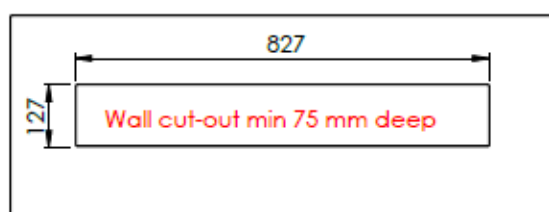
Example:  
800



#### Built-in Burner without lip

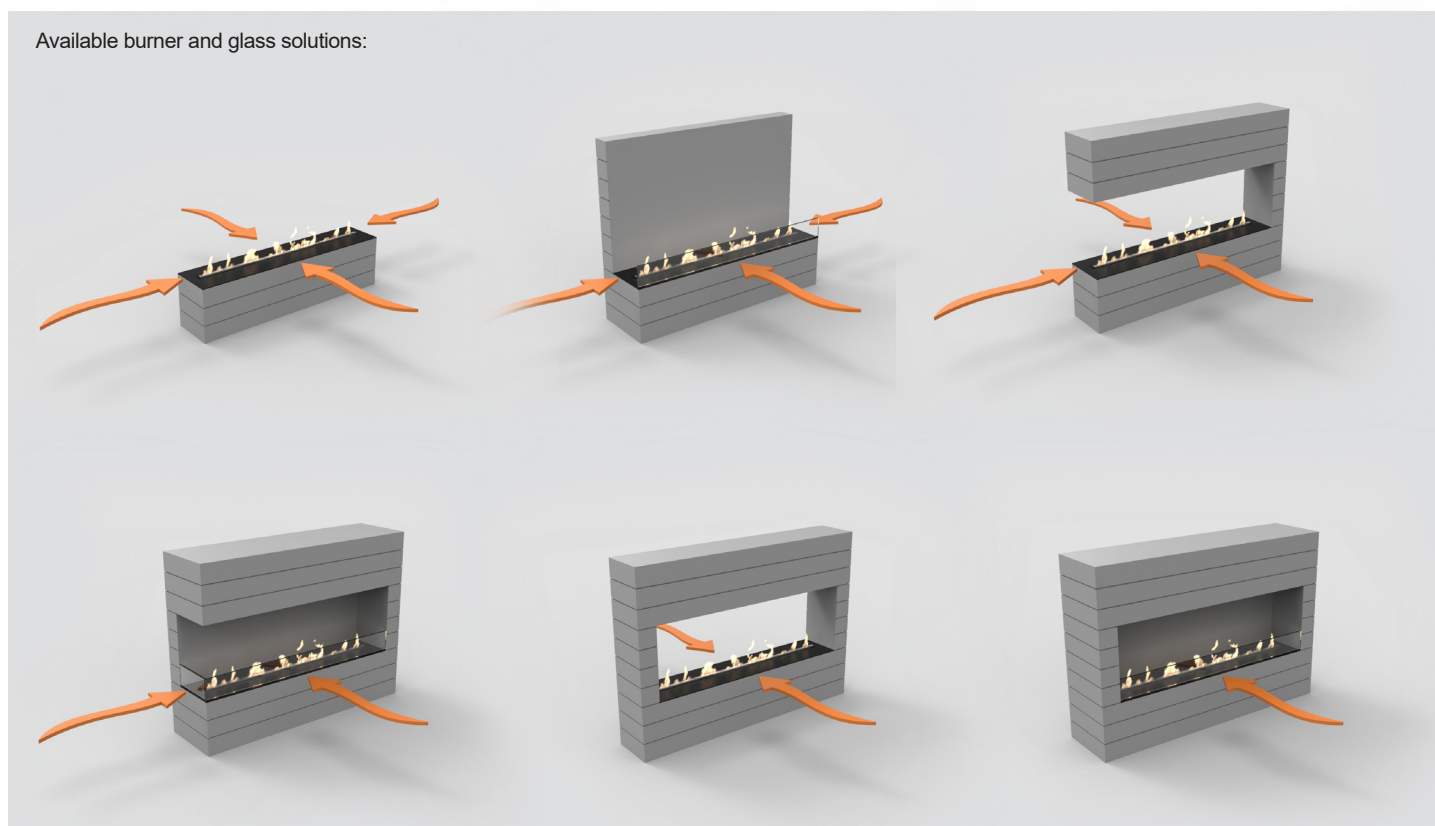
400 Manual Burner without Lip: 425x75x125mm	W127xL427xD75
500 Manual Burner without Lip: 525x75x125mm	W127xL527xD75
600 Manual Burner without Lip: 625x75x125mm	W127xL627xD75
700 Manual Burner without Lip: 725x75x125mm	W127xL727xD75
800 Manual Burner without Lip: 825x75x125mm	W127xL827xD75
900 Manual Burner without Lip: 925x75x125mm	W127xL927xD75

Example:  
800



### BURNER/GLASS

Available burner and glass solutions:



Decoflame strongly recommends installing one or more glass shields in order to protect the flame from draught, while keeping it vivid. The glass shield is available on request and can be mounted on the furniture/wall in which the fireplace is installed.

Please see above the situations where the glass is optional and where it is mandatory.

The built-in burner with lip itself can be provided with one or two glass screens - front and back.

The built-in burner without lip itself is **NOT** available with glass screen.

We highly recommend to mount glass screen in the surroundings nearby the flames instead. Please notice above illustration.

## 6. DIMENSIONS / VOLUME / HEAT OUTPUT

	400mm	500mm	600mm	700mm	800mm	900mm
Capacity / Liter	1.9	2.4	2.9	3.4	3.9	4.4
Fuel consumption l/h	0.27	0.34	0.41	0.48	0.56	0.62 l/h
Burning time / Hours	> 7 hours	> 7 hours	> 7 hours	> 7 hours	> 7 hours	> 7 hours
Max heat output: kWh	1.6	2.0	2.4	2.8	3.2	3.6
Minimum room size: m³	32	40	48	56	64	72

The heat efficiency of the decoflame® burners varies. However, our burners are designed mainly for decorative purposes - they should only be considered as supplement to any primary heating system.

The burning-hours depends on the enviroment it is placed in and if there is open doors or windows, as well as if the burner is fully open or partly.

Example: Very large room with several meters to the ceiling and door open with natural draft in the room.

500mm burner: Burning time with fully open burner = 5 hours

### ATTENTION

1	Chose a position for your fireplace which is not exposed to any draught, as bioethanol is a volatile fluid. In fact, only the vapors of the bioethanol are burning when lit.
2	Avoid draughts, as this can cause soot formation and increases the fuel consumption.
3	Make sure that you install your fireplace in a safe place, which means with a distance of at least one metre (40 in) from furniture, curtains or other inflammable objects.
4	We <b>DO NOT</b> recommend to position TV screens or valuable paintings above the fire as the upwards drifting warm air might damage those. If you intend to do so anyway, please contact DecoFlame for advice.
5	Make sure that the cut-out into which you intend to place the decoflame® burner with safety chamber is perfectly in level and that your whole fireplace construction is made of non-flammable material like Fermacell or GypRock Fireline.
6	Ensure that the room in which the fireplace is situated is well ventilated at all times during operation of your fireplace without causing any draught.
7	If your installation foresees more than one decoflame® built-in burner placed next to each other in one custom-made safety chamber, you can only operate ALL burners together once you have filled them. If you wish to operate not all of the burners in your setting you must keep the ones you do not intend to light EMPTY.
8	For safety reasons always keep a <b>safety distance</b> of at least 40 cm (16 in) from a lit fireplace, as your movement may have an impact on the flames.
9	<b>DO NOT</b> place any inflammable materials or clothes in the vicinity of your burner. <b>DO NOT</b> place any pebbles or stones or other refractory decorative items on or around the burner
9	When choosing a suitable position for your fireplace please also consider keeping it out of reach of smaller children and pets.
10	Always light and extinguish your decoflame burner in a safe manner. <b>ONLY</b> adults may light and extinguish the flames.
11	You should not touch the flames of the lit fireplace or blow into the flames, as this will cause the flames to escape from the fireplace and become uncontrollable.
12	When lit, the surfaces of the upper part of the burner as well as the safety glass will be warm. <b>Avoid</b> touching those surfaces.
13	<b>NEVER</b> leave the fireplace unattended when it is lit.
14	Are there children or pets around? If so, make sure ab adult <b>keeps an eye</b> on them at all times during the operation of your fireplace.
15	<b>ALWAYS</b> light and extinguish your DecoFlame® fireplace in a safe manner.
16	<b>ALWAYS</b> have the the shutter tool and appropriate fire extinguish material nearby!



## 7. OPERATING INSTRUCTIONS

Built-in burner with lip / without lip are designed and manufactured exclusively for use with liquid bioethanol of highest purity (96.5 - 97.5%). **DO NOT** use any other fuel or materials or bioethanol of inferior quality as this will void your warranty.

### Filling and lighting

The fireplace must **ONLY** be lit up when it is cold!

**NEVER** light a fireplace if you have spilled bioethanol outside the burner.

1. Remove eventually safety glass and position it safely and carefully on a soft surface in order not to chip its edges.
2. Open the slider of the burner.
3. Open a bottle of bioethanol and fill the fuel into the burner opening until the liquid becomes visible to max. indicator. We recommend using a funnel or spout in order to avoid spilling and you must refill the burner to max. every time you wish to use the fireplace.
4. Use a long lighter, minimum 140mm between ignition point and handle - to light the vapours.
5. Reposition eventually safety glass.
6. Keep an appropriate distance when lighting the fireplace.
7. **DO NOT** smoke when filling the burner with bioethanol.
8. **DO NOT** – under any circumstances – refill the burner when it is in use or still hot from previous use.

**IMPORTANT!** Wait around 30 - 60 minutes or until you are certain that the burner has cooled down before you refill it with bioethanol.

### Extinguish

Ideally, you allow all of the bioethanol in the burner to be burnt. Should it be necessary to extinguish the fire before the burner is empty, please **ONLY** use the following method: place the hole in handle supplied with your fireplace on the stud of the burner lid and slide the lid to a closed position by pulling it in a continuous, decisive movement towards you. In this way, the oxygen supply is interrupted immediately and the flames are extinguished. Should you not succeed at the first attempt, do try again until the flames are extinguished.

**DO NOT** attempt to blow out the fire!

Should you extinguish the fire at a time when there is still bioethanol left in the burner, it is recommended that you **WAIT** around 30 - 60 minutes or until you are certain that the burner has cooled down **BEFORE** you refill it with bioethanol as described under items 1. to 8. above.

**DO NOT** smoke when filling the burner with bioethanol.

**DO NOT** – under any circumstances – refill the burner when it is in use or still hot from previous use.

**DO NOT** light the burner in case you have overfilled it!

Partly empty the burner and the safety chamber underneath from any excess bioethanol. Use a paper kitchen towel in order to wipe off any excess bioethanol from the burner and surrounding surfaces. Then, wash your hands thoroughly **BEFORE** lighting the bioethanol vapours.

**DO NOT** touch the glass or the metal surfaces of the burner to avoid burning as they can become warm during use.

As for all real fires - keep children away from it!

### Overfilled

If overfilled, **DO NOT** light the fireplace.

Please be aware that the fireplace must be completely cold before you can empty the fireplace of bioethanol.

If the overfilling is not violent, the excess bioethanol can be wiped up with a lint-free cloth or paper towel until the liquid is at the required level.

For larger overfills: Lift the burner out of its safety chamber (wear rubber gloves and reach into the burner opening grabbing its top plate) and empty part of the bioethanol into a container (bucket, bowl or similar – you can discard it into the toilet or kitchen sink and flush it away with water as it is only alcohol) until the burner is only filled up to the max. level indicator. Dry off any bioethanol from the top and the outside of the burner. Then use paper towel to dry off any liquid from the safety chamber. Re-insert the burner into the safety chamber. Remove the rubber gloves and light the burner.

### In case of fire follow these guidelines:

We recommend keeping the proper fire extinguisher next to the burner.

Suitable extinguishing agents: carbon dioxide CO<sub>2</sub>, dry chemical, powder, foam, chemical foam, alcohol-resistant foam, water spray. For small fires use chemical agents, carbon dioxide (CO<sub>2</sub>), water mites or alcohol resistant foam.

For larger fires use alcohol resistant foam or water spray.

Water is not effective. Do not rinse the floor with water.

Vapors can travel above the surface to the remote ignition source and cause the restart of the ignition.

Unsuitable extinguishing agents: Water jet.



Open slider



Filling the fireplace using a funnel



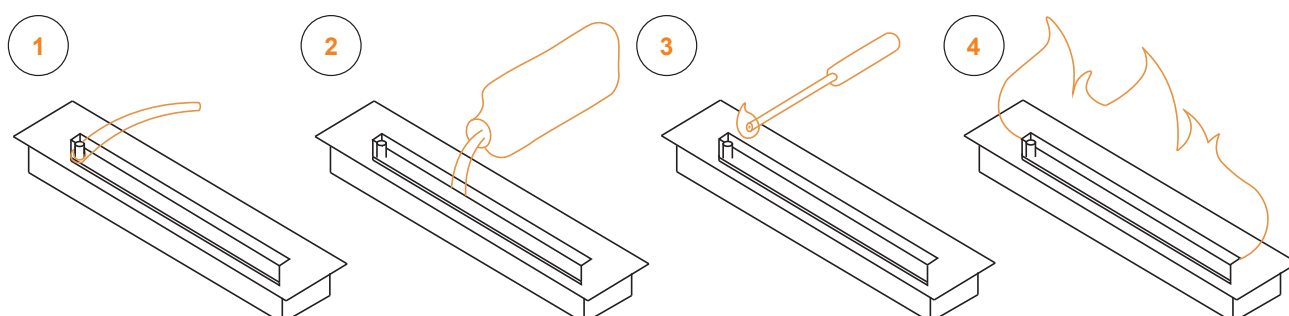
Filling the fireplace using a filling valve  
(Only for use on Decoflames 3 liter cans)



Min. and max. indicator



Closed slider





## 8. BIOETHANOL

### BIOETHANOL IS EXTREMELY FLAMMABLE!

**DO NOT mix bioethanol with other fuels**  
**Avoid contact with eyes and skin.**

Bioethanol is alcohol which is made by means of fermentation of organic, sustainable and environmental-friendly raw materials such as corn, potatoes and sugar cane. This alcohol is then denatured, i.e. made unfit for human consumption. During combustion, water vapour and carbon dioxide are created.

Only the vapour of the bioethanol burns. The bioethanol boils from 78°C (172.4°F) and the flash point is 13°C (55.4°F). The bioethanol vapours are heavier than air, so it will always remain on top of the surface of the liquid bioethanol. All Decoflame fireplaces can be operated only with bioethanol of at least 96.5% but not more than 97.5%. We recommend Decoflame bioethanol, which has an alcohol percentage of 96.5%.

#### Storing conditions

**Always thoroughly follow the instructions on the packaging of the bioethanol.**  
**The bioethanol must be stored safely and out of reach of children.**

Only store in original and correctly labeled containers. Keep containers tightly closed. Store in a cool, dry and ventilated room away from ignition sources, oxidizers and non-compliant materials. Provide preventive measures against the generation of static charge. The bioethanol must be at room temperature before it can be ignited.

#### Safety measures

**Preventive measures:** Avoid inhalation of vapors. Avoid contact with eyes, skin and clothing. Persons who are prone to skin allergies or lung disease should not come into contact with bioethanol. We recommend that people with breathing problems or asthma consult their doctor prior to using a bioethanol fireplace. Use standard precautions for working with chemicals.

#### Measures to prevent fire

Due to the high flammability of the product strictly follow the special fire protection measures at the storage location. Protect containers from overheating. Bioethanol should be stored in a fireproof container and out of reach of children.

Prevent bioethanol from coming in contact with heat, sparks and flames. Keep away from non-compliant materials such as metal or alkali. The fireplace can be difficult to start, if it is below room temperature. Avoid draughts, as these will lead to overheating of the burner.

### DO NOT

1	<b>DO NOT</b> use any other fuel, materials or bioethanol of inferior quality as this will void your warranty.
2	<b>DO NOT</b> use any solvents or oils to your bioethanol as this will void your warranty.
3	<b>DO NOT</b> mix bioethanol with other fuels as this will void your warranty.

#### Denatured Bioethanol is classified as:

Flammable Liquid Class 1B (for Flammability)

Class 3 PGII (for Transportation)

UN1170 (Identification Code)

Regulated by various standards around the world.

You must familiarise yourself and comply with these regulations in order to safely and legally store, handle, decant and use this fuel.



## 9. MAINTENANCE

The surface of **the materials can change with time** due to exposure to the heat of the fire. This leads to a slight change in colour or structure. This is to be **considered normal wear and tear** and does not constitute a product flaw or fault.




- You can clean all parts of your burner frequently with a lint-free cloth or kitchen paper towel and a non-abrasive detergent, some bioethanol or another alcohol-based product.
- You can brush the burner's surface up every once in a while, with the enclosed 3M sponge (always brush in direction of the grain).
- Do handle eventually glass surround carefully to avoid chipping as hardened glass is especially delicate

## 10. DISPOSAL AND RECYCLING

The New York Series is made of stainless steel and glass. The front depends of select of finishes. If you wish to dispose of the appliance, please adhere to the regional rules and regulations.

You will find, that most parts of your Decoflame fireplace can be recycled.

## DO NOT

1	<b>DO NOT</b> light the bioethanol if you have over filled the burner.	
2	<b>DO NOT</b> fill the burner with bioethanol until the temperature is below 40 degrees celcius.	
3	<b>DO NOT</b> smoke when filling the burner with bioethanol.	
4	<b>DO NOT</b> under any circumstances – refill the burner when it is in use or still hot from previous use.	
5	<b>DO NOT</b> attempt to blow out the fire - or blow into the flames, as this will cause the flames to escape from the fireplace and they will be uncontrollable	
6	<b>DO NOT</b> cover the fireplace when lid.	
7	<b>DO NOT</b> place any inflammable materials or clothes on the fireplace.	
8	<b>DO NOT</b> place anything on top of the burner.	
9	<b>DO NOT</b> decorate the burner with ceramic pebbles or other items as this will lead to overheating and damage to the glass surround.	
10	<b>DO NOT</b> place any pebbles or stones on the burner as these will crack and might cause injury or damage to the fireplace.	
11	<b>DO NOT</b> place any ceramic logs or pebbles on top of the burner as these will increase the combustion temperature, which increases the fuel consumption and might cause undesired micro-particles in the room air.	
12	<b>DO NOT</b> place any valuable paintings or electronic equipment like TV screens or speakers above the fireplace. The warm air from the fire will rise upwards and might damage anything in its way.	
13	<b>DO NOT</b> use the burner as a barbecue! It is not suited to roast anything.	
14	<b>DO NOT</b> touch the flames.	

### IMPORTANT:

The shutter is supposed to be slightly bend - do NOT straighten!



## 11. SYMBOLS OF AWARENESS



Do not fill fuel into the open flame



Do not fill fuel into the hot burner



Do not touch the flames



Health hazard



Do not position the fireplace near combustible items



Protect fireplace against draft



Keep suitable extinguishing agent ready



Warning - flammable material



No smoking



Never fan the fire



Adhere to instructions about fuel and fireblanket



### 1. Where can I position the bioethanol burner?

Always safely placed in its safety chamber, you may position the decoflame® burner in non-flammable surroundings in any draught-free location, as no chimney or flue is required. For example, you could place it in your flat, house, holiday home – or in your office.

### 2. Is any kind of approval required?

Regulations and laws might vary though from country to country. Make sure you observe these regulations and laws before you use the fireplace.

### 3. What to consider when installing your decoflame® burner?

DecoFlame recommends that the complete surroundings are constructed of fire resistant boards like Fermacell, GypRock Fireline or another non-inflammable material. Furthermore, it is important that the safety chamber and burner are positioned perfectly in level.

### 4. Is the burner ready for use after unpacking?

Yes, once you have placed it safely inside its safety chamber in accordance with the instructions given herein, the only thing you need to add is bioethanol.

### 5. What is the best way to light the burner?

Use long fireplace matches or a fireplace lighter - minimum 140mm between ignition point and handle.

### 6. What should I do if I overfilled the burner?

Inside the burner/s you will notice a min. and max. level indicator.

Always fill the burner to the max. level indicator. Should you accidentally overfill the burner, the excess bioethanol will be caught in the safety chamber underneath the burner. DO NOT light the fireplace!

Remove the burner from out of the safety chamber by reaching with your fingers inside the burner in order to get hold of it (it is advisable to wear rubber gloves). Empty part of the contents of the burner into a bucket (you can dispose of the bioethanol in your kitchen sink – it is only alcohol). Use paper towel in order to dry the contents of the safety chamber completely.

Reposition the burner, place the lid on top. Once your hands are clean and dry, use a long lighter or match to light the fire.

### 7. Is bioethanol dangerous?

No, bioethanol is neither dangerous to humans nor the environment and it is biodegradable. Bioethanol is made of organic, sustainable and environmental-friendly raw materials such as corn, potatoes and sugar cane. During combustion, water vapour and carbon dioxide are created, which can even be beneficial to your indoor plants. Make sure that you keep the fuel in a safe place out of reach of children, as it is highly flammable.

### 8. Is it dangerous to inhale the gas that is developed during combustion?

When burning, bioethanol is dissolved into nothing else but water vapour and CO<sub>2</sub> (carbon dioxide). The amount of CO<sub>2</sub> is only 0.0011%. As the combustion temperature of your bioethanol fireplace lies below 400°C, no other harmful substances are released during combustion. Always make sure that the room in which the fireplace is situated is well ventilated (without causing a draught) in order to ensure a sufficiently high level of oxygen during operation of the fireplace – as fire consumes oxygen. Always consult your doctor prior to using a bioethanol fireplace in case you have problems with your respiratory system (asthma etc).

### 9. In which quantities is bioethanol supplied?

DecoFlame® bioethanol is supplied in plastic containers of 1, 3 and 10 litres. In order to facilitate filling of the burner you should fill a smaller container with bioethanol and use a funnel for pouring the liquid into the burner.

### 10. What is the burning duration of one litre of bioethanol?

Between 2-4 hours, depending on the size of the burner/s, the room ventilation and setting of the flame intensity.

### 11. Does the fireplace give off much heat when in use?

The heat efficiency of the decoflame® burners varies (see chapter Dimensions, Volume and Heat Output). However, our burners are designed mainly for decorative purposes - they should only be considered as supplement to any primary heating system.

### 12. Can paper and wood be used as fuels on the decoflame® fireplace?

No, you may only use bioethanol of at least 96.5% but max. 97.5% purity in the burner.

### 13. How can the flame be extinguished when the burner is lit?

Ideally, you allow all of the bioethanol in the burner to be burnt. Should you extinguish the fire at a time when there is still bioethanol left in the burner, please ONLY use the following method: Using its handle pull the slider on top of the burner gently but in a continuous, decisive movement towards you until the burner opening is closed.

### 14. Can the burner be used in a room of any size?

Generally, the relation between heat efficiency and minimum room volume can be set to 1:20. This means that a 2kW/h fireplace requires a minimum 40m<sup>3</sup> room volume.

The package will include:

	Pcs.	Content	
A:	1	Built-in burner with lip	
B:	1	Built-in burner without lip	
C:	1	Shuttertool	
D:	1	Manual	

Decoflame ApS

Date

**FAQ:**

<https://www.decoflame.com/faq>

*Follow the Fire Authorities and national and local requirements regarding bioethanol fireplaces.*

*Subject to product and glass tolerances, typographical errors and technical errors.*

*Decoflame ApS reserves the right to make changes without notice.*

*We refer to Decoflame's General Terms of Sale and Delivery.*

*V030924*