

weber 

Spirit Range  
**2017-18**



[www.weberbbq.com.au](http://www.weberbbq.com.au)





#### **Weber Spirit Gas Barbecue.**

The Weber Spirit is built to Weber's exacting standards and features Weber's world class cooking system. It has everything you could need from a gas barbecue, at an exceptional price – that's what the Weber Spirit barbecue is all about. It's an exceptional value gas barbecue.

The Weber Spirit is compact and stylish. With a gleaming black porcelain enamel lid and an intelligent design, it's the perfect premium gas barbecue for backyards, courtyards and balconies.

Designed with Weber's patented Flavorizer cooking system, the Weber Spirit can of course grill great steaks, chops and sausages on the porcelain coated cast iron grill, all with that famous Weber flavour. But why stop there? The Spirit will cook magnificent crackling pork, beautiful roasts and even bake desserts and cakes.

The Weber Spirit is a compact and affordable Weber premium gas barbecue that will cook memorable food and stand the test of time.

#### **The Weber Spirit E-210**

A compact two burner model with a gleaming porcelain black hood, black side tables and removable screen.

#### **The Weber Spirit E-310**

A compact three burner model with a gleaming black porcelain hood, black side tables and removable screen.

#### **The Weber Spirit Premium E-210**

A compact two burner model with a gleaming porcelain black hood, fully enclosed cabinet with door, stainless steel side tables and control panel.

#### **The Weber Spirit Premium E-310**

A compact three burner model with a gleaming porcelain black hood, fully enclosed cabinet with door, stainless steel side tables and control panel.

#### **The Weber Spirit Premium E-330**

A compact three burner model with a gleaming porcelain black hood, fully enclosed cabinet with door, stainless steel side tables and control panel, side burner and the incredibly powerful Sear Station™ for those restaurant quality steaks.





## WHAT SETS THE SPIRIT BARBECUE APART



### 12,000 BTU side burner (E330 only)

Fry eggs, pancakes and onion rings on the powerful side burner. Great for preparing sauces and even deep frying.

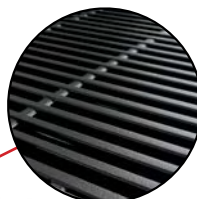


### Porcelain enamel lid

Heavy gauge steel, protected by the highest quality porcelain enamel won't rust, peel or scratch.

### Porcelain enamelled cooking grills

Porcelain enamelled steel or cast iron (Spirit Premium range only) creates a cooking surface with even heat. Porcelain coating prevents rusting and makes cleaning easier.



### Lifetime ignition

All Weber Spirit ignition systems are guaranteed to work for the life of your barbecue.



### Sear Station (E330 only)

An additional sear burner creates an intense high heat cooking area for perfectly searing steaks.



### Cleaning system

The cleaning system funnels fat and juices away from the heat of the cooking area to prevent fat fires. Fat collects in a disposable drip tray for easy cleaning.



### Flavorizer cooking system

Porcelain coated steel Flavorizer bars protect the burners, prevent flare ups, and create barbecue smoke to give food amazing Weber flavour.





**SPIRIT®**



Features	Spirit E-210	Spirit E-310
Stainless steel burners	2	3
Combined primary burner rating	28 MJ (26,500 BTU)	33.8 MJ (32,000 BTU)
Crossover™ ignition system	•	•
Electronic ignition system		
Piezo ignition system	•	•
Porcelain enamelled hood	•	•
2 porcelain enamelled cast iron cooking grills		
2 porcelain enamelled steel cooking grills	•	•
Heavy duty porcelain coated cast iron hotplate	•	•
Porcelain enamelled Flavorizer™ bars	•	•
Side burner		
Sear Station™		
Fixed commercial grade thermometer	•	•
Enclosed storage area with perforated screen	•	•
Enclosed storage area with painted steel door		
Heavy gauge steel bottom shelf	•	•
6 tool holders	•	•
2 crack proof all weather wheels	•	•
2 locking caster wheels	•	•
2 stainless steel work surfaces		
2 black enamel work surfaces	•	•
Precision fuel gauge (LP model)	•	•
2 metre quick disconnect hose (NG model)	•	•
Detailed operating instructions	•	•
Weber Spirit cooking guide	•	•
Weber limited 10 year warranty	•	•

Recommended Retail Price	LP \$849	NG \$1009	LP \$949	NG \$1109
--------------------------	----------	-----------	----------	-----------

All Spirit natural gas models include delivery and assembly in capital city areas and Specialist Dealer regional towns.  
All other areas POA.

Optional Extras		
Spirit LP models delivery and assembly in capital city metro areas and Specialist Dealer regional towns	\$130	\$130

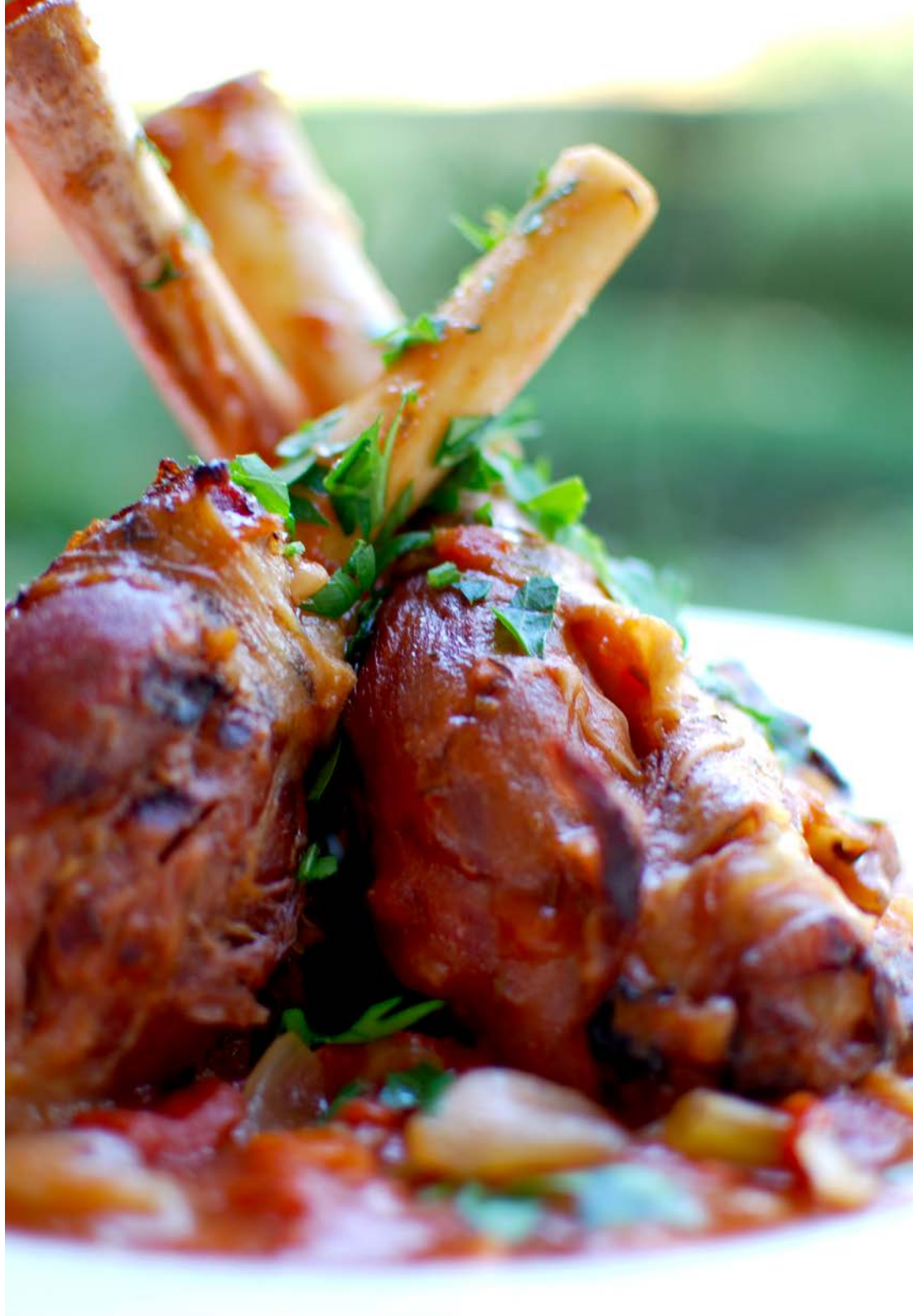
Dimensions		
Height - lid closed	115 cm	115 cm
Height - lid open	160 cm	160 cm
Width	127 cm	132 cm
Depth - lid closed	61 cm	61 cm
Depth - lid open	81 cm	81 cm
Primary cooking area	2244 cm² (51 cm x 44 cm)	2700 cm² (60 cm x 45 cm)
Warming rack area	552 cm² (46 cm x 12 cm)	672 cm² (56 cm x 12 cm)
Total cooking area	2796 cm²	3372 cm²

Colours		
Black	LP K46010924 NG K47010924	LP K46410024 NG K47410024





\$130	\$130	\$130
115 cm	115 cm	115 cm
160 cm	160 cm	160 cm
127 cm	132 cm	132 cm
61 cm	61 cm	61 cm
81 cm	81 cm	81 cm
2244 cm <sup>2</sup> (51 cm x 44 cm)	2700 cm <sup>2</sup> (60 cm x 45 cm)	2700 cm <sup>2</sup> (60 cm x 45 cm)
552cm <sup>2</sup> (46 cm x 12 cm)	672 cm <sup>2</sup> (56 cm x 12 cm)	672 cm <sup>2</sup> (56 cm x 12 cm)
2796 cm <sup>2</sup>	3372 cm <sup>2</sup>	3372 cm <sup>2</sup>
LP K46110024    NG K47110024	LP K46510024    NG K47510024	LP K46810024    NG K47810024





## Gas Barbecue Accessories



**Full Length Covers**  
Spirit 200/300 series  
7106

RRP \$119.95



**Barbecue Mitt Black with Kettle Motif**  
Has a special flame retardant coating to protect you from the heat of your barbecue.

6532

RRP \$21.95



**All Purpose Cleaner**

Will keep your BBQ looking its best. It has a unique formula made to specifically remove fat and smoke stains.

991159

RRP \$14.95



**Weber Rib Rack**

Heavy gauge, nickel plated steel rib rack creates up to 50% more usable cooking area.

6605

RRP \$29.95



**Grill-Out™ Handle Light**

7516

RRP \$59.95



**Spirit Gas Barbecue Gourmet Barbecue System Grills**

Spirit S/S GBS Grill  
7586

RRP \$139.95



**Gas Barbecue Rotisseries**

Rotisserie to suit Spirit  
8517

RRP \$179.95



**Weber Ware Frying Pan Large**  
Platinum Teflon coated easy to clean surface and the detachable handle.

17725

RRP \$89.95





### Snapcheck Grilling Thermometer

Super-fast and accurate to within 1°C. The Snapcheck thermometer is the ultimate instant thermometer.

6752

RRP \$149.95



### 3 Sided Grill Brush

Makes it easy to get between the grill bars and other difficult places.

Small 6494

RRP \$21.95

Large 6493

RRP \$26.95



### Cookbooks

Weber's American Barbecue

991166

RRP \$39.95

Weber's Barbecue Bible

991165

RRP \$34.95



### iGrill mini

Take the guesswork out of barbecuing with the iGrill Mini digital Bluetooth® thermometer.

7202

RRP \$79.95



### iGrill 2

Featuring a digital LCD display, total control of your barbecue meals has never been easier.

7203

RRP \$149.95



### iGrill Probe

Either replace an existing meat probe or add a couple more to your iGrill 2.

7211

RRP \$19.95



### iGrill Ambient Probe

This durable, stainless steel probe clips onto your grill to provide exact ambient temperature tracking.

7212

RRP \$19.95



### Silicone Basting Brush

Removable silicone bristles are easy to clean and will not shed, stain or retain odours.

6661

RRP \$24.95



### High Temperature Premium Gloves

Handle hot pizza stones, hotplates and tools.

L/XL - 6670

RRP \$64.95

S/M - 6669

RRP \$64.95





Dealer



A signatory to  
the National Packaging Covenant

Weber-Stephen Products Co. (Aust) Pty. Ltd.

Australian Representative

R. McDonald Co. Pty. Ltd.

A.C.N. 007 905 384.

104 South Terrace, Adelaide, South Australia, 5000.

Consumer information phone 1300 301 290.

To learn more or to register your Weber® barbecue online,  
visit [www.weberbbq.com.au](http://www.weberbbq.com.au)

Patents, trademarks and copyright.

Weber®, the kettle shape and the kettle silhouette are registered trademarks of Weber-Stephen Products LLC, 1415 South Roselle Road, Palatine, Illinois 60067. Weber® Genesis®, Summit®, Weber® Q®, Weber® baby Q® and Weber® Family Q®, Flavorizer® are trademarks of Weber-Stephen Products LLC, 1415 South Roselle Road, Palatine, Illinois 60067. The shape of the Weber® Q™ is a registered trademark.

The Q design is covered by the following Australian patents: Patent No. 2007202420 – Weber Q grill and support frame assembly, Patent No. 2005274149 – Weber Q fuel support apparatus, Patent No. 2004220587 – Gas burner with flame stabilization structure for Weber Q, Patent No. 2003300872 – Barbecue grill and support frame assembly for Weber Q, Patent No. 2003297113 – Heat distributing cooking grate with grease control structure for Weber Q and Patent No. 2003241363 – Curvilinear burner tube for Weber Q and the following pending Australian applications: Patent Application No. 2007286136 – Bayonet connection for Weber Q burner tube. An application to register the 'Q' logo has been filed and approved for publication. This booklet incorporates material which is copyright 2017 and owned by © Weber-Stephen Products LLC, © R. McDonald Co. Pty. Ltd.