

**weber** 

Kettle Range  
**2017-18**



# Weber® Premium Charcoal Barbecues



The Original Kettle  
1952

The 2016  
Original Kettle

## **The Weber kettle – Australia's roasting wonder!**

In pursuit of culinary perfection, some people spend 5, 10, even 15 thousand dollars trying to find the very best cooking equipment. Electric, gas or microwave, when they get it home they discover something amazing. They discover there's no cooking appliance in the world that can produce a roast that gets anywhere near the outstanding flavour and juiciness of a good old 'Weber kettle roast'.

## **Over 60 years old and still going strong**

It's hard to believe the Weber kettle was invented over 60 years ago. There doesn't seem to be any end to its popularity; its sales come in waves and recently have been escalating again.

More and more children of the original Weber kettle pioneers are rediscovering, in fact demanding, the magic of Weber kettle cooking.

## **The Weber kettle flavour you just can't get any other way**

Australians, in search of complete outdoor cooking mastery, have voted with their feet.

They now have a modern gas barbecue for everyday cooking and a Weber kettle for 'serious' barbecue occasions when the quality of food is everything. Word of mouth has seen over a million Weber kettles sold in Australia so far and all because Weber cooked hams, roasts and poultry have astounded guests with a delicious flavour that you just can't get any other way.

## **The Australian Barbecue Icon. Why is this so?**

We know that our kettle has changed Australian attitudes towards barbecuing forever. Back in the 1970s and 80s it was our kettle and its indirect cooking system that first allowed ordinary Australians to roast whole joints of meat outdoors. Even now, the incredible flavour of these barbecue roasts still distinguishes our kettle from all other barbecues sold in this country. That's why so many Weber kettles have been sold and that's why it's the only barbecue in Australia to ever attain icon status. Everyone agrees that it's synonymous with spectacular food and memorable entertaining.

## **Indirect cooking - how it works**

We use two fires instead of one. The fat from your food will drop into the disposable drip tray below. This means that you get much healthier, fat free roasts, without any flare ups. We call this 'indirect cooking' because the food is cooked using natural convection without any fire directly underneath it.



Apart from the unforgettable flavour, the great advantage of using this method of cooking is that you don't even have to turn the meat. Your barbecue cooks the most extraordinary roast, every time, all by itself.

## **Top selling cookbook ensures Weber kettle mastery**

For nearly 30 years we've recommended that our kettle owners buy 'The Complete Australian Barbecue Kettle Cookbook'. We know it ensures that you will become a master Weber kettle chef. That's why these days, not only do we recommend the book, we include it with all of our 57 cm kettles. It's our guarantee of your success. It is a remarkable hard bound cookbook (224 pages, 200 colour photographs, over 400 recipes, complete with useful barbecue tips and troubleshooting). We think there's probably no better product handbook in the world.



## WHAT SETS THE WEBER® KETTLE APART



### Built in lid thermometer

Monitor the internal temperature of the Weber Kettle while grilling, roasting, baking or smoking.



### Lid handle with heat shield

The nylon handle will not melt, crack or become brittle out in the elements. The heat shield means the handle stays cool enough to hold.



### Porcelain enamel bowl and lid

Heavy gauge steel, protected by the highest quality porcelain enamel won't rust, peel or scratch.



### Plated steel hinged cooking grill

Hinged sides allow for adding extra fuel or smoking wood during a cook, without lifting the grill.



### One-Touch™ cleaning system

The One-Touch system controls air flow into the bowl of the kettle, and doubles as a cleaning system to sweep ashes into the ash catcher below.

### Removable ash catcher

Collects ashes that are swept from the bowl of the kettle. Easily removable for simple disposal. Premium kettles feature a high capacity ash catcher that prevents ash from blowing away.

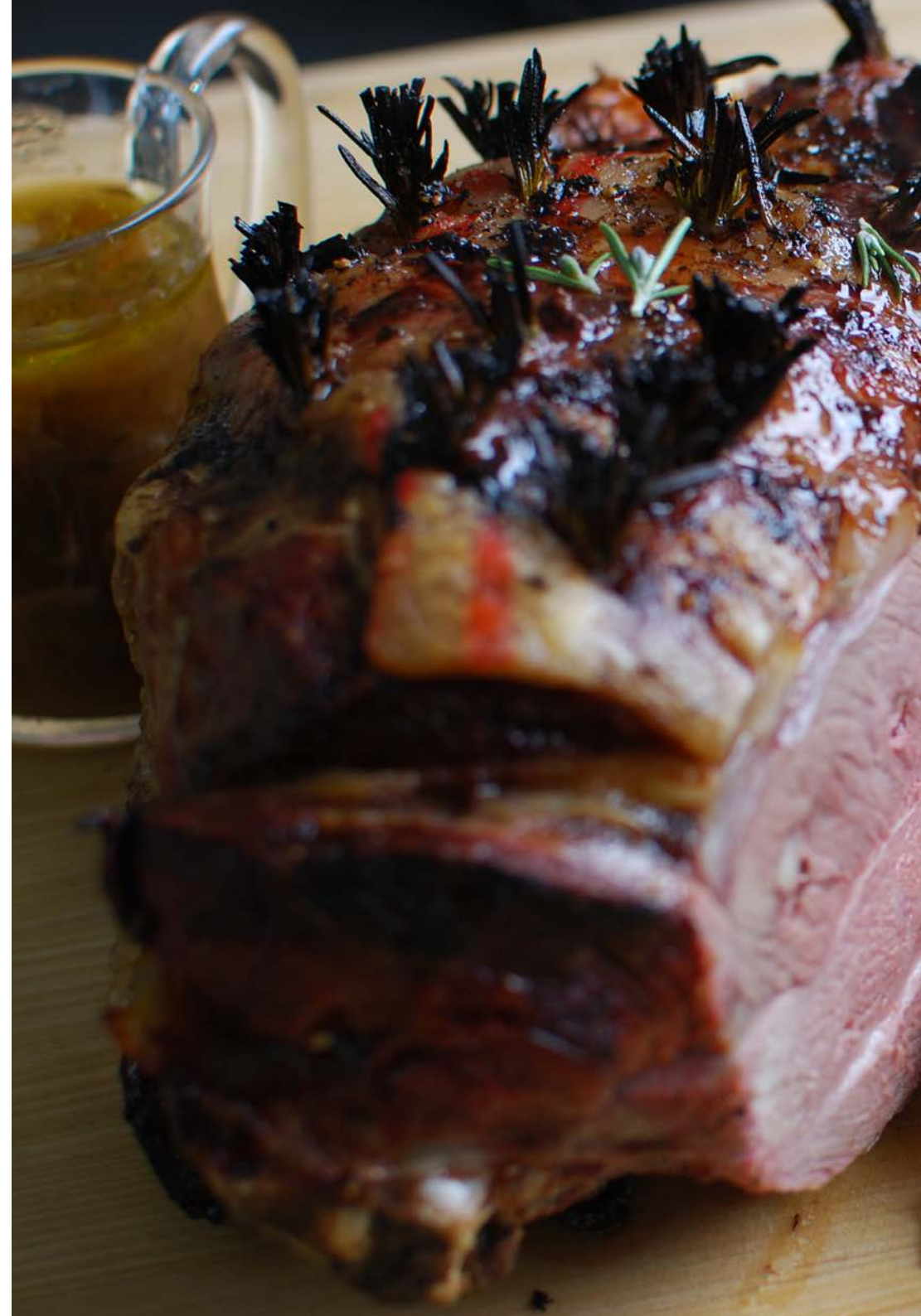


### Char-basket fuel holders

Makes switching between direct (grilling) and indirect (roasting/smoking) easy by keeping barbecue fuel together in two baskets.

### Versatile cooking system

Makes indirect and direct cooking easy. The Kettle is perfect for grilling, roasting, baking and low and slow smoking.







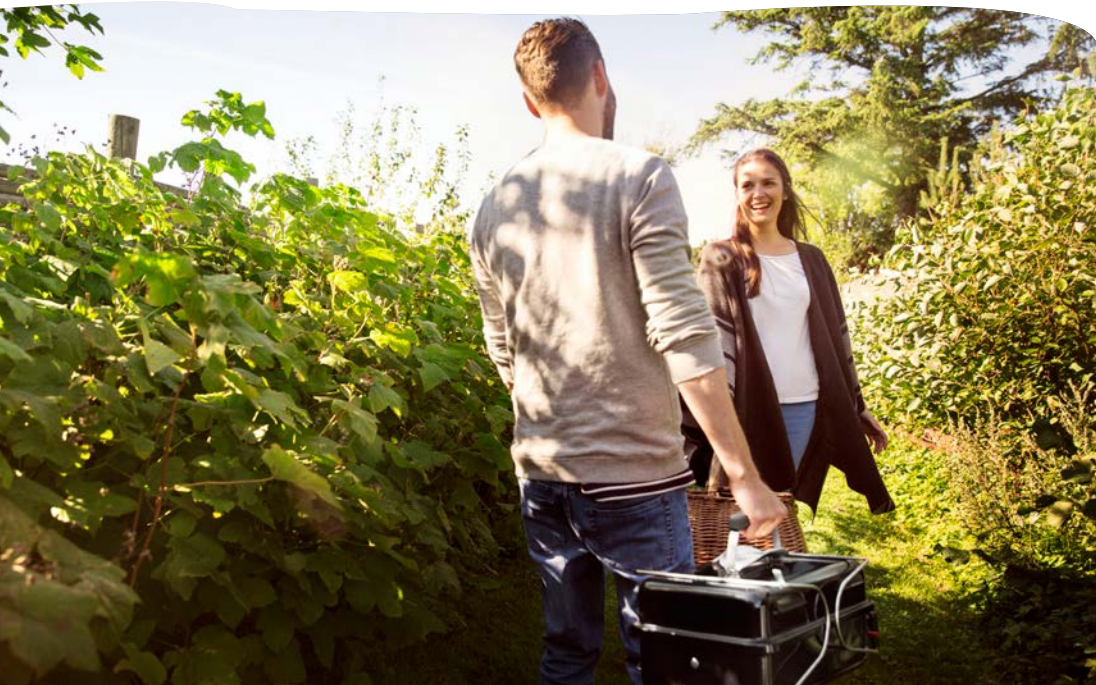
# Weber® Premium Charcoal Barbecues



Features	Smokey Joe®	Go-Anywhere™	Jumbo Joe®
Porcelain enamelled bowl and lid	•	•	•
Chrome plated steel cooking grill	•	•	•
Nickel plated lid lock for carrying	•	•	•
Lid can be used as wind break	•	•	•
Glass reinforced nylon handle(s)	•	•	•
No rust aluminium vents	•	•	•
Ash catcher	•	•	•
Charcoal Rails for Indirect Cooking	•	•	•
Weber 10 year limited warranty	•	•	•
<b>Recommended Retail Price</b>	\$109.95	\$129.95	\$169.00
<b>Optional Extras</b>			
Direct delivery in capital city metro areas.	\$44.00	\$44.00	\$44.00
All other areas POA			
<b>Dimensions</b>			
Height	43cm	37cm	50cm
Width	36cm	53cm	50cm
Depth	37cm	31cm	52cm
Cooking area	960cm <sup>2</sup>	1040cm <sup>2</sup>	1821cm <sup>2</sup>
<b>Colour</b>			
Black	K10024	K121024	K1211724



Features	Compact Kettle	Original Kettle
Porcelain enamelled bowl and lid	•	•
No rust aluminium vents	•	•
Aluminised steel One-Touch™ cleaning system	•	•
Factory assembled One-Touch™ cleaning system	•	•
Removable no-rust aluminium ash catcher	•	•
Removable high capacity ash catcher	•	•
Chrome plated steel hinged cooking grill	•	•
Gourmet Barbecue System cooking grill	•	•
Molded resin nylon handles	•	•
Glass reinforced nylon handles	•	•
Bowl handle with tool hooks	•	•
Rapidfire™ charcoal 'V' grate	•	•
2 Char-Basket™ charcoal fuel holders	•	•
Bezel lid thermometer	•	•
Tuck-Away™ lid holder	•	•
Fold down steel work table	•	•
Thermoset work table	•	•
Removable digital cooking timer	•	•
Weather protected Char-Bin™ storage container	•	•
Heavy duty steel cart frame	•	•
Wire bottom shelf	•	•
3 tool holders	•	•
Locking casters	•	•
Crack proof all weather wheels	•	•
20 cm crack proof all weather wheels	•	•
Aluminium drip pan	•	•
Weber 10 year limited warranty	•	•
Kettle Cookbook	•	•
<b>Recommended Retail Price</b>	57 cm Black: \$219.00	57cm Black: \$329.00 57cm Coloured: \$349.00
<b>Optional Extras</b>		
Direct delivery in capital city metro areas	\$44.00	\$44.00
Delivery & assembly in capital city	\$76.00	\$76.00
All other areas POA		
<b>Dimensions</b>		
Size	57 cm	57 cm
Height	97 cm	98 cm
Width	63 cm	63 cm
Depth	57 cm	57 cm
Cooking area	2550 cm <sup>2</sup>	2550 cm <sup>2</sup>
<b>Colours</b>		
Black	K61597	K1341524
Crimson		K1343324
Smoke		K1346324





Original Premium Kettle	Original Premium Kettle with GBS	Performer™ Kettle	Performer Premium Kettle
•	•	•	•
•	•	•	•
•	•	•	•
•	•	•	•
•	•	•	•
•	•	•	•
•	•	•	•
•	•	•	•
•	•	•	•
•	•	•	•
		•	•
			•
			•
		•	•
		•	•
		•	•
		•	•
•	•	•	•
•	•	•	•
•	•	•	•
•	•	•	•
57 cm Black: \$449.00	57 cm Black: \$499.00	57 cm Black: \$649.00	57 cm Black: \$799.00
\$44.00	\$44.00	\$66.00	\$66.00
\$76.00	\$76.00	\$110.00	\$110.00
57 cm	57 cm	57 cm	57 cm
98 cm	102 cm	107 cm	102 cm
69 cm	69 cm	100 cm (table out)	128 cm
57 cm	57 cm	73 cm	57 cm
2550 cm²	2550 cm²	2550 cm²	2550 cm²
K14401024	K14501024	K15301024	K15401024

Features	Ranch™
Porcelain enamelled bowl and lid	•
Removable ash catcher	•
Glass reinforced nylon handle(s)	•
Stainless steel hinged cooking grill	•
Tuck-Away™ lid holder	•
4 charcoal baskets	•
Heavy duty steel frame	•
3 tool holders	•
Crack proof all weather wheels	•
Locking casters	•
10 aluminium drip pans	•
Complete Australian Barbecue Kettle Cookbook	•
Weber 10 year limited warranty	•
<b>Recommended Retail Price</b>	\$2399.00
<b>Optional Extras</b>	
Delivery and assembly in capital city metro areas.	included
All other areas POA	
<b>Dimensions</b>	
Height	107 cm
Width	96 cm
Depth	114 cm
Cooking area	6900 cm <sup>2</sup> (93 cm diam)
<b>Colours</b>	
Black	K60020







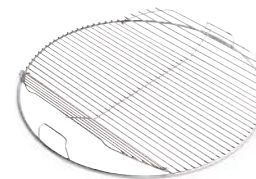
## Charcoal Barbecue Accessories



**Charcoal Baskets**

Pair 7403

RRP \$39.95



**57 cm Cooking Grill - Hinged**

7436

RRP \$59.95



**Large Drip Pan - Pack of 10**

Especially designed for barbecue use. Made to the highest quality without any sharp edges.

6416

RRP \$19.95



**Rapidfire™ Chimney Starter**

The easy way to get charcoal fired up and ready to use quickly. Ready to cook on in 20-25 minutes.

7419

RRP \$39.95



**Charcoal Kettle Hotplate**

Ideal for cooking eggs, bacon, onion rings or pancakes.

93345

RRP \$44.95



**57 cm Kettle Rotisserie**

For the Weber range of 57 cm kettles. Features a heavy duty electric motor with a wooden handle.

8493

RRP \$249.00



**57 cm Kettle Value Cover**

Keep your Weber kettle clean and protected from dirt and dust.

7176 replacing 7451

RRP \$29.95



**Deluxe Weatherproof Covers**

Protect your Weber with a premium Cover

57cm Cover 7149

RRP \$69.95

Performer Cover 7151

RRP \$89.95

Performer Premium Cover 7152

RRP \$99.95



**iGrill 2**

Featuring a digital LCD display, total control of your barbecue meals has never been easier.

7203

RRP \$149.95



**iGrill mini**

Take the guesswork out of barbecuing with the iGrill Mini digital Bluetooth® thermometer.

7202

RRP \$79.95





# Gourmet BBQ System



## Gourmet BBQ System

The Weber Original Gourmet Barbecue System cooking grill is the first piece for building the ultimate outdoor charcoal cooking system. With the Gourmet Barbecue System and your new Weber Kettle, amazing outdoor cooking is only limited by your imagination. Explore the endless possibilities of the Gourmet BBQ System. The assortment of GBS inserts, open up a new world of culinary opportunities that you would have never imagined creating in a barbecue.



### Pizza Stone

Cook delicious homemade pizzas outside with the Gourmet Barbecue System Pizza Stone.  
8836 RRP \$69.95



### Cast Iron Wok

The porcelain enamelled cast iron gives you the ideal high heat for wok cooking.  
7422 RRP \$109.95



### Cast Iron Sear Grate

Magnificent steaks with the flavour only charcoal cooking can give you.  
8834 RRP \$69.95



### Cast Iron Griddle

Cook delicious bacon, eggs and pancakes on the Gourmet Barbecue System Cast Iron Griddle.  
7421 RRP \$69.95



### 57 cm Heavy Duty Hinged Cooking Grill

A heavy gauge cooking grill with a removable insert.  
8835 RRP \$69.95



Dealer



A signatory to  
the National Packaging Covenant

Weber-Stephen Products Co. (Aust) Pty. Ltd.

Australian Representative

R. McDonald Co. Pty. Ltd.

A.C.N. 007 905 384.

104 South Terrace, Adelaide, South Australia, 5000.

Consumer information phone 1300 301 290.

To learn more or to register your Weber® barbecue online,  
visit [www.weberbbq.com.au](http://www.weberbbq.com.au)

Patents, trademarks and copyright.

Weber®, the kettle shape and the kettle silhouette are registered trademarks of Weber-Stephen Products LLC, 1415 South Roselle Road, Palatine, Illinois 60067. Weber® Genesis®, Summit®, Weber® Q®, Weber® baby Q® and Weber® Family Q®, Flavorizer® are trademarks of Weber-Stephen Products LLC, 1415 South Roselle Road, Palatine, Illinois 60067. The shape of the Weber® Q™ is a registered trademark.

The Q design is covered by the following Australian patents: Patent No. 2007202420 – Weber Q grill and support frame assembly, Patent No. 2005274149 – Weber Q fuel support apparatus, Patent No. 2004220587 – Gas burner with flame stabilization structure for Weber Q, Patent No. 2003300872 – Barbecue grill and support frame assembly for Weber Q, Patent No. 2003297113 – Heat distributing cooking grate with grease control structure for Weber Q and Patent No. 2003241363 – Curvilinear burner tube for Weber Q and the following pending Australian applications: Patent Application No. 2007286136 – Bayonet connection for Weber Q burner tube. An application to register the 'Q' logo has been filed and approved for publication. This booklet incorporates material which is copyright 2017 and owned by © Weber-Stephen Products LLC, © R. McDonald Co. Pty. Ltd.