

weber 

Genesis® II LX Range
2018 - 19



The Weber® GS4™ cooking system, found in all Genesis® II LX barbecues, is the biggest step forward in gas barbecue cooking since the original Genesis was introduced in the 1980s



The cooking system is the heart of any barbecue. In the 1980s, Weber revolutionised gas barbecue cooking forever with the introduction of the Flavorizer® cooking system in the first ever Weber Genesis gas barbecue. Now, over 30 years later, Weber has done it again. At Weber, countless hours of research and development have been invested into once again reinventing and reengineering gas barbecue cooking.

The Weber GS4 high performance cooking system, found in all Genesis II LX gas barbecues, is the biggest step forward in gas barbecue cooking since the original Genesis was introduced in the 1980s.

Anyone who has used an ordinary gas barbecue knows that there are some common frustrations – uneven heat across the cooking area, flare ups and fat fires, and inconsistent ignition. The four components of the GS4 cooking system resolve all of these common flaws to deliver sensational barbecue food with incredible flavour.

GS4 High Performance Burners – The GS4 burners represent the biggest step forward in burner design in decades. The GS4 burners are tapered to deliver a constant pressure of gas along the entire burner, creating perfectly even heat.

GS4 Infinity™ Ignition – The Infinity ignition system in the Genesis II LX barbecue has been reimaged to deliver the most durable, consistent ignition ever seen in a gas barbecue. By moving sensitive components away from the heat of the barbecue, and upgrading the quality of all materials, the Infinity Ignition is guaranteed to last forever.

GS4 Flavorizer Bars – The angled steel bars that sit above the burners in the Genesis II LX are one of the original innovations in the Weber Genesis series barbecue. These specially angled bars allow fat and juices to fall safely past the burners without risk of a flare up. Any fat and juices that hit the Flavorizer bars sizzles and smoulders to create smoke, imparting a wonderful barbecue flavour to your food.

GS4 Fat Management System – The fat management system in the Genesis II LX guides excess fat and debris away from the heat of the burners, into a disposable drip tray below the cooking area. This means fat won't build up near the burners, helping reduce the chance of a fat fire.



We grill, you grill, iGrill®

There's nothing worse than serving overcooked or undercooked food to your friends and family. Now you never need to again.

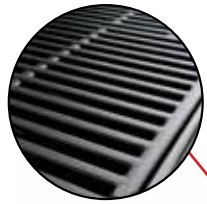
The only way to know for sure that your barbecue meat is cooked just the way you like it is with a meat thermometer. The iGrill range of Bluetooth® thermometers will monitor your food's temperature and even alert you via your smart phone or tablet.

All Genesis II LX barbecues are built iGrill ready. That means they can be fitted with an integrated iGrill thermometer. The iGrill will track how well done your food is, tell you when it's ready and can even alert you when your gas bottle is running low.

It is the ultimate thermometer for the ultimate barbecue.



WHAT SETS THE GENESIS® II LX BARBECUE APART?



Porcelain enameled cast iron cooking grills
Cast iron conducts and holds heat evenly to create the perfect cooking surface. Porcelain coating prevents rusting.



Porcelain enamel lid
Heavy gauge steel, protected by the highest quality porcelain enamel won't rust, peel or scratch. Mid-hinge design saves space when lid is open.

12.7 MJ (12,000 BT) Side burner
Fry eggs, pancakes and onion rings on the powerful side burner. Great for preparing sauces and even deep frying.



Infinity™ ignition
Guaranteed to light first time, every time. This is barbecue ignition reimagined for greater durability and reliability.

High + burner setting
Every burner is equipped with High + to give you extra high, intense, searing heat when you need it. Adds up to 15% output to speed up preheat times, and gives you the flexibility to create a searing zone anywhere on your barbecue.



Cleaning system
Centrally located design helps quickly funnel fat and juices away to prevent fat fires. Fat collects in a disposable drip tray for easy cleaning.



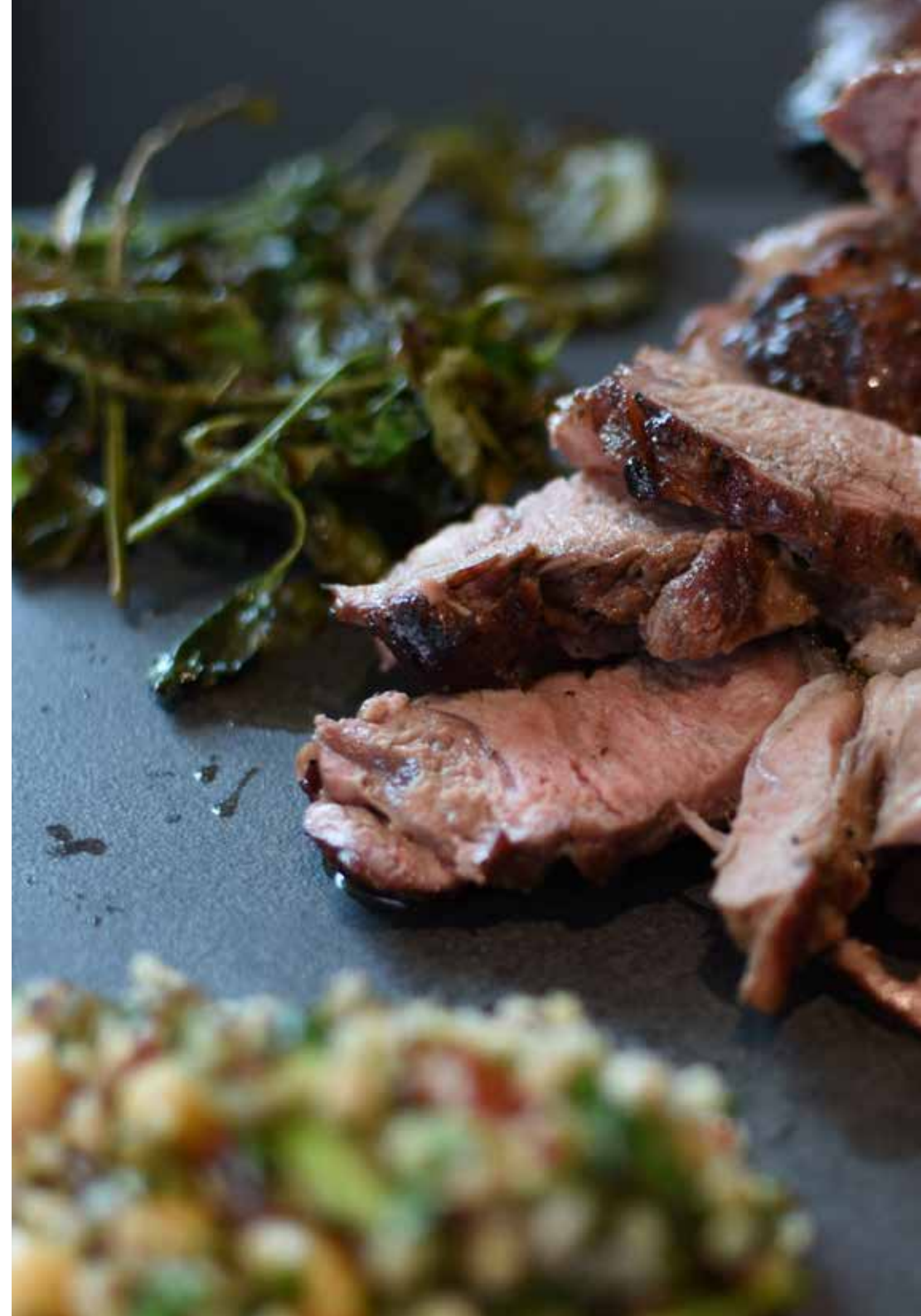
High performance burners and Flavorizer® bars
Revolutionary tapered burner tubes ensure perfectly constant gas flow from front to back. Stainless steel Flavorizer bars protect the burners, prevent flare ups, and create barbecue smoke to give food amazing Weber flavour.



LED gas gauge and iGrill® 3 ready
Front mounted LED gas gauge accurately reads out the level of gas left in your bottle. Removable to allow iGrill 3 installation.



The Weber® Genesis II LX has been designed to stand the test of time. It is constructed of the highest quality materials like 304 grade stainless steel, porcelain coated steel, and even Teflon® coated wiring. In fact, the Weber Genesis II LX is so well built that it comes with Weber's 100% 10 year guarantee. That means every piece of your barbecue, whether it's the wheels, the wires or the cooking grill, is guaranteed against manufacturing defects for a full 10 years. With Weber's commitment to quality and world famous customer service, you can be confident that your Genesis II LX will cook sensational barbecue meals year after year.





Features	Genesis® II LX E340	
GS4™ stainless steel burners	3	
Combined primary burner rating	45.9 MJ (43,500 BTU)	
GS4 Infinity™ ignition system	•	
Porcelain enamelled hood	•	
Porcelain enamelled cast iron cooking grills	2 grills	
Heavy duty porcelain coated cast iron hotplate	•	
GS4 stainless steel Flavorizer® bars	•	
Fixed commercial grade thermometer	•	
Enclosed storage area	•	
Double skinned doors	•	
Fold down side table	•	
iGrill® 3 ready	•	
3 tool holders	•	
2 caster wheels (locking)	•	
2 durable all weather wheels	•	
Elevations™ compatible Tuck-Away™ warming rack	•	
Front mounted LED gas gauge (LP model)	•	
2 metre quick disconnect hose (NG model)	•	
Detailed operating instructions	•	
Weber® Genesis II LX cooking guide	•	
Weber 100% 10 year warranty	•	
Grill-Out™ handle light	•	
High+ heat setting	•	
Recommended Retail Price	LP \$1999.00	NG \$2219.00
All Genesis II LX natural gas barbecues include delivery and assembly in capital city areas and specialist dealer regional towns. All other		
Optional Extras		
Elevations grill rack and skewer set	\$69.95	
Full length cover	\$134.95	
Rotisserie	\$199.95	
iGrill 3 Bluetooth Thermometer	\$179.95	
Dimensions		
Height - lid closed	122 cm	
Height - lid open	160 cm	
Width	150 cm	
Depth - lid closed	74 cm	
Depth - lid open	84 cm	
Primary cooking area	3264 cm ² (68 cm x 48 cm)	
Tuck-Away warming rack area	891 cm ² (66 cm x 13.5 cm)	
Total Cooking area	4155 cm ²	
Colour		
Black	LP K61014324	NG K66014324



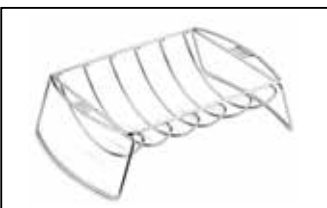
Genesis II LX E440		Genesis II LX E440 Premium	
4		4	
54.8 MJ (52,000 BTU)		54.8 MJ (52,000 BTU)	
•		•	
•		•	
3 grills		3 grills	
•		•	
•		•	
•		•	
•		•	
•		•	
•		•	
•		•	
•		•	
•		•	
•		•	
•		•	
•		•	
•		•	
•		•	
LP \$2199.00	NG \$2439.00	LP \$2499.00	NG \$2739.00
areas POA			
\$69.95		\$69.95	
\$149.95		\$149.95	
\$219.95		included	
\$179.95		included	
122 cm		122 cm	
160 cm		160 cm	
165 cm		165 cm	
74 cm		74 cm	
84 cm		84 cm	
4128 cm ² (86 cm x 48 cm)		4128 cm ² (86 cm x 48 cm)	
1134 cm ² (84 cm x 13.5 cm)		1134 cm ² (84 cm x 13.5 cm)	
5262 cm ²		5262 cm ²	
LP K62014324	NG K67014324	LP K62014324-P	NG K67014324-P





Genesis® II LX Barbecue Accessories

For the complete range of Weber accessories visit www.weberbbq.com.au



Weber Reversible Rib & Roast Holder
Heavy gauge, nickel plated steel rib and roast rack creates up to 50% more usable cooking area.
6469 RRP \$39.95



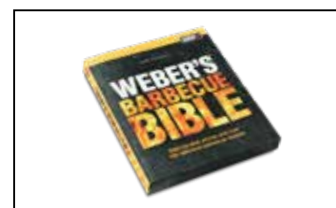
Full Length Covers
Genesis II 3 Burner 7130 RRP \$134.95
Genesis II 4 Burner 7131 RRP \$149.95



All Purpose Cleaner
Will keep your BBQ looking its best. It has a unique formula made to specifically remove fat and smoke stains.
991159 RRP \$14.95



Weber's American Barbecue Cookbook
991166 RRP \$39.95



Weber's Barbecue Bible Cookbook
991165 RRP \$34.95



Weber's Greatest Hits Cookbook
991167 RRP \$39.99



Snapcheck™ Grilling Thermometer
Super-fast and accurate to within 1°C. The Snapcheck thermometer is the ultimate instant thermometer.
6752 RRP \$149.95



3 Sided Grill Brushes
Makes it easy to get between the grill bars and other difficult places.
6494 - Small RRP \$21.95
6493 - Large RRP \$26.95



iGrill® 3
Monitors food and notifies you on your smart device once it is cooked to your liking.
7204 RRP \$179.95



Weber Ware Frying Pan Large
Platinum Teflon® coated surface is easy to clean, comes with detachable handle.
17725 RRP \$89.95



High Temperature Premium Gloves

Handle hot pizza stones, hotplates and tools.
6670 - L/XL RRP \$64.95
6669 - S/M RRP \$64.95



BBQ Tool Set

2 Piece Stainless Steel BBQ Tool Set
6645 RRP \$44.95



BBQ Tool Set

3 Piece Stainless Steel BBQ Tool Set
6630 RRP \$64.95



Elevations™ Vegetable Basket

Roast your perfectly seasoned veggies while the main event sears underneath.
7616 RRP \$34.95



Elevations Stainless Steel Rack

The versatile rack elevates your barbecuing possibilities by acting as a second grill.
7617 RRP \$24.95



Elevations Stainless Steel Skewer Set

The skewers fit into the tiered grilling system, elevating them directly above the cooking grates.
7618 RRP \$29.95



Genesis® II Rotisseries

Genesis II 3 burner
7656 RRP \$199.95
Genesis II 4 burner
7657 RRP \$219.95



Universal Smoker Box

This smoker box has a hinged lid with a large tab allowing you to easily add wood chips during the cooking process.
7576 RRP \$49.95



Smoking Wood Chips

Available in pecan, hickory, apple, cherry or mesquite smoking woods.
RRP \$11.95



Genesis II Diamond Cooking Sear Grate

Get professional sear marks while sealing in the moisture and flavour of your food.
8854 RRP \$79.95





Dealer



Australian Packaging Covenant

A signatory to the National Packaging Covenant

Weber-Stephen Products Co. (Aust) Pty. Ltd.

Australian Representative

R. McDonald Co. Pty. Ltd.

A.C.N. 007 905 384.

Level 1, 142-144 Fullarton Road, Rose Park, South Australia, 5067

Consumer information phone 1300 301 290.

To learn more or to register your Weber® barbecue online,
visit www.weberbbq.com.au

The following are registered trademarks of Weber-Stephen Products LLC, 1415 South Roselle Road, Palatine, Illinois 60067; In Australia and or New Zealand - Weber®, Genesis®, Summit®, Weber® Q®, Weber® baby Q® and Weber® Family Q®, Spirit®, Smokey Joe®, iGrill®, Grill Academy®, Flavorizer®, Flavourizer®, Flavouriser®, Kettle silhouette®, The kettle shape®, the shape of the Weber® Q®, Go-Anywhere™, Jumbo Joe™, Original Kettle™, Performer™, Pulse™, Ranch™, Smokey Mountain Cooker™, Char-Baskets™, Char-Bin™, Crossover™, Elevations™, Firespice™, GBS™, Grill-Out™, Gourmet BBQ System™, GS4™, Infinity™, One-Touch™, Rapidfire™, Sear Station™, SlideFrame™, Snapcheck™, Snap-Jet™, Tuck-Away™, Tuck-N-Carry™, Weber® Specialist Dealers™ and Weber® Store™. This booklet incorporates material which is copyright 2018 and owned by © Weber-Stephen Products LLC, © R. McDonald Co. Pty. Ltd.